

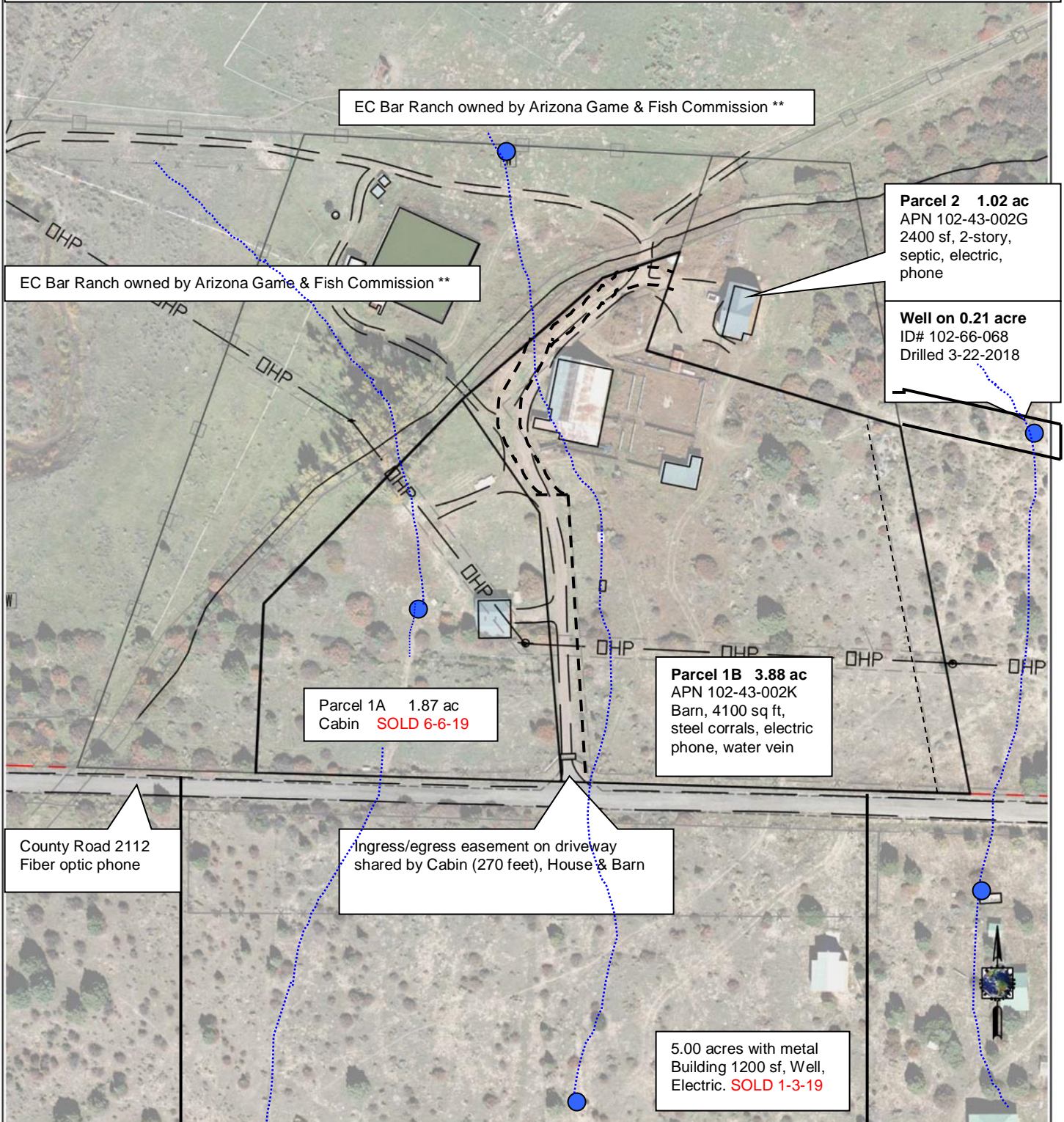
Parcels For Sale

File: AerialMap2Parcels61019.doc

- Horse Property: 2400 sq foot 2-story house on 1.02 ac (Parcel 2), well on 0.21 acre parcel, and 4100 sq foot barn on 3.88 acres (Parcel 1B) with corrals. Ingress/egress easement driveway.
- These parcels were approved under Minor Land Division rules and recorded 12-4-17 and 5-8-18 to split 10.27 acres (APN 102-43-002D) into Parcel 2 (102-43-002G) and Parcel 1B (102-43-002K).

**** NO PORTION OF THE 390-ACRE EC BAR RANCH THAT ADJOINS THE ABOVE PARCELS IS FOR SALE.**

Disclaimer: All features on this map are approximate and for illustration only.



- Possible or potential water veins (approximate locations)
- Water well (approximate sites)
- Property boundaries (approximate)
- - - Ingress/egress easement (approximate)